



LIVING

Produced by

BARRATT
— LONDON —

MAKE MORE THAN A HOME AT *Springfield Place*

It's showtime
Films, theatre, music
and comedy

Foodie heaven
Sugar and spice and
all things nice

Go green
What's on in SW17's
outdoor spaces

Shopping around
Boutiques, brands
and retail therapy

LIVE SW17 LIFE TO THE FULL

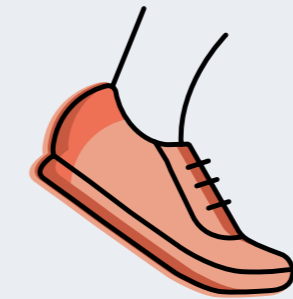


Tooting's Tram & Social

So... what **does** make the perfect place to call home?

For some, heaven is mooching about quirky little shops on a lazy Sunday morning or catching the latest arthouse movie. Others love laughing their socks off at a comedy club, taking their tastebuds on a culinary adventure or simply blowing away the cobwebs in beautiful green spaces.

Whatever you're in the mood for, chances are you'll find it in SW17 – with Springfield Place at the very heart.



By foot

Tooting Market
13-minute walk

Wandsworth Common
15-minute walk

Earlsfield
31-minute walk

Northcote Road
35-minute walk

Closer to more

Discover a wealth of soon-to-be-favourite hotspots, all within easy walking distance.

Foodies are sure to find something to suit their tastebuds at SW17's range of cafés, eateries, bars and even Michelin-starred restaurants.

page 04

Curious people can explore the **Springfield Vision** and discover how people and wellbeing are at the heart of the development.

page 10

Shopaholics can step out in style among SW17's eclectic mix of boutiques, market stalls and delis.

page 15

Outdoor explorers can wind down or work out in the new 32-acre public park, or take a fitness class to meet likeminded friends.

page 18

Culture vultures will be spoiled for choice by a busy calendar of activities, shows, classes and events.

page 22

Discoverers can track down beautiful green spaces, tasty eateries, cafes, bars and more with our area map.

page 24



A DAY IN THE LIFE

*Saturdays are all about
live sport and dancing*



Mid-morning

Start with a casual brunch at Earlsfield's Bean & Hop. An espresso and their Forager brunch with truffle hollandaise will set you up nicely for a fun day out.



Early afternoon

Warm up your vocal chords as you wander along Garratt Lane to cheer on AFC Wimbledon, who are back at their spiritual home on Plough Lane.



Late afternoon

Celebrate the Dons' win, or dissect what went wrong, over a pint or two of SW17's finest craft beer at the By The Horns brewery bar in the shadow of the main stand.



Early evening

Despite arriving in Battersea less than two years ago, Kibou Sushi is now a local favourite. The spicy Volcano Rolls with special Kibou sauce are well worth a try.



8.30 pm

The Northcote pub is where everyone is headed. Work through the throng of people to get to the bar and keep everyone going with an espresso martini or three. The dancing kicks off early here and you always bump into someone you know.



10pm

Night owls should go to Archer St cocktail bar just along from the Northcote Pub. The DJs here pride themselves on keeping everyone on their feet – or even on tables – till the early hours.



AFC Wimbledon



Bean & Hop

*Or shop around
and enjoy the laid
back lifestyle*



Morning

Why not start the day right with a workout on the common? Join the crowd of swimmers at Tooting Lido, where there's usually a group of locals ready for a chat between lengths. Discussing the temperature of the water is always a good ice breaker!



Take a breather

After you've worked up an appetite, make your way along to Mud cafe in Tooting, for lovely coffee and piles of waffles and Eggs Benedict.



Midday

Browse the shops at Tooting Market. There's a revolving weekly edit of one-of-a-kind upcycled furniture, handmade clothing and special soft furnishings. Still peckish? Grab a sourdough pizza fold from Panzerotto Blues to eat as you go.



Mid-afternoon

Stroll up Garratt Lane to book a squash court at Tooting Leisure Centre.



Early evening

Gather up your group and hit the beach huts in the huge beer garden at The Leather Bottle. Get stuck into their lively garden games and you might just end up winning a tippie or two for you and your mates.

SWITCH OFF

There's something to suit every taste

Great food, friendly faces and a buzz like no other is what people say about socialising in SW17.

Over the last few years, the local food scene has transformed with many travelling from much further afield to reach the dining destinations on the doorstep of Springfield Place.

The focus here is not just on fresh, locally sourced ingredients and seasonal menus, but also on vibrant international flavours; from Antipodean brunch to sushi to modern Turkish fare, there really is an option for all taste buds.

Midweek diners might try Spice Village, an Indian restaurant raved about for its healing eclectic menu and decadent lamb karahi, whereas a special occasion could be marked with a glass of champagne at the Michelin-starred Chez Bruce restaurant.

Pair this with a lively social scene of bars and pubs and it's easy to see why this area has become known as a place to meet friends. Archer St's unique cocktails provide a twist on your average Piña Colada, while The Castle pub's beach-style decking is where to settle for a pint in the sun.

Earlsfield even has its own microbrewery, ideal for craft beers and where an energetic crowd gather every weekend. And this is all within walking distance of Springfield Place.



LOCAL
EATS

EXCITE YOUR TASTEBUDS

Chez Bruce



'Our Turkish brunch is legendary'

What is Bababoom all about?

I would say we're a friendly local restaurant in the heart of Battersea and we have a modern Middle Eastern-inspired menu, made with fresh ingredients. Eve [Bugler] our founder fell in love with the cuisine after a few trips to the Middle East and now you get to try those flavours in a bright restaurant with a great vibe – oh, and we do everything from brunch to dinner service.

What's most popular among local diners?

It has to be our chicken shish kebab with Turkish yoghurt marinade and harissa sauce. I think it's been a favourite since we opened in 2016.

“**'Kebab Chase' – run from our Battersea to Westfield Stratford restaurant and we'll feed you a kebab for free.**

Why do locals rave about your food?

We use an open charcoal grill, so everyone can see what's cooking. And our really friendly staff are always ready to recommend you the best dish for your tastes.

When's the best time to hit the restaurant?

People love our brunch and we have a lunchtime deal where you get a main plus a drink for £10, but in the

evening it's *really* buzzy. The end of the week is busiest, we don't take bookings, but will always try to make space for you, whether you're with mates, on a date or you're a family.

What is surprising about the restaurant?

Our founder was a marathon runner, so we have our 'Kebab Chase' – run from our Battersea to Westfield Stratford restaurant and we'll feed you a kebab for free. Then there's our unlimited frozen Margaritas Power Hour – it sounds dangerous, but you have to be more careful of brain freeze than anything else!

@bababoomlondon



Sophie Anderson, 21, Operations Assistant Bababoom restaurant, Battersea, SW1

TOP SPOTS

"Tequila & Tacos is a fun new restaurant on Northcote Road, work up an appetite before you go"

Sophie

"WE'RE EARLSFIELD'S LIVING ROOM"



Vera Rueger, 30, owner
Belle Amie cafe, Earlsfield, SW18

Tell us about Belle Amie...

Earlsfield has lots of lovely coffee shops but we've been here for 15 years, so we're the longest-running. We're just a real community hub. It's not just good coffee, but also we run a really friendly, welcoming shop. Most of our staff have been here over two years and we're basically a family.

“
We're just a real
community hub

You must have plenty of regular locals?

Every day and it's so nice. Belle Amie is open to pretty much everyone. Some people pop down and work from here for a few hours, others drop in for coffee and our selection of homemade cakes. And then at the weekend, we tend to get pretty busy for brunch. I always call Belle Amie 'Earlsfield's living room' because we have all kinds of people and they tend to all talk to each other and we become friends with them.

What do locals order?

Our carrot cake is probably our most popular, followed by our brownies and banana bread – I actually bake them all myself – and then on Saturday and Sunday it's all about brunch items like Eggs Benedict, and we do a really nice classic menu that seems to go down very well. We just do really good, fresh food.

Where can we usually find you?

If you pop into the cafe on Monday or Tuesday, you'll be able to find me, but a lot of the time I'm the one baking the cakes behind the scenes. I've started taking orders for local customers and it's been quite popular.

How do you spend your days off?

I live 10 mins from the shop so it's lovely to just stroll around with my dog, Tibo. I might walk up to King George's Park and there are always lots of other dogs to meet there too. I like meeting friends at The Leather Bottle pub, they have a really nice garden in the back, it's huge and the vibe is just really good.

@belleamiecoffe

TOP SPOTS

"Don't miss 422 Cicchetti & Wine,
it's small but the food and
wine are mighty"
Vera



Local Spots

Daddy Bao
113 Mitcham Rd,
SW17 9PE

**Graveney Gin
Cocktail Bar**
Unit 22a
21-23 Tooting
High St,
SW17 0SN

The Plant Cafe
2-4 Gattton Rd,
SW17 0SQ

Bean & Hop
424-426
Garratt Lane,
SW18 4HN

Leather Bottle
538 Garratt
Lane,
SW17 0NY

Nazmin's
398 Garratt
Lane,
SW18 4HP

**The Toast Rack
Bake House**
314 Trinity Rd,
SW18 3RG

Humble Grape
2 Battersea Rise
SW11 1ED

**Kibou –
Japanese
Kitchen & Bar**
175-177
Northcote Rd,
SW11 6QF

THE SPRINGFIELD VISION

Springfield Village



Tereza Papadoudi, 33, accredited architect and Senior Technical Coordinator at Barratt London, has been part of the design team from the start and has plenty of insight into how people and their wellbeing have influenced the Springfield Place development.

“It’s just something completely different,” she reveals. “We’ve created beautiful homes with plenty of open, green areas and included a new 32-acre parkland. It’s a tranquil space in one of the most popular London hotspots.”

Springfield Place will include a range of 1, 2, and 3 bedroom homes and apartments, and is ideally located for travel in and out of central London. It connects the popular boroughs of Wandsworth, Tooting and Earlsfield, opening residents up to incredible restaurants, a buzzing nightlife and plenty of ways to pursue an active lifestyle.

And as more people move in, Springfield Place is set to evolve into a community of its own, thanks to the new Springfield Park, the village square and eventually, shops and cafes. These will all form around historic listed buildings, which gives the area a real sense of character.

“It’s been important to us to respect the architecture of the more gothic-style Victorian buildings, such as the church and hospital,” says Tereza, “so the red brick we have used in some of the new apartment blocks adds a sense of history. We’ve also ensured there are lots of clean lines and big white spaces, to promote that sense of calm.”

Mental health has been a huge consideration when plotting out the new homes. Not only is there ‘breathing space’ between apartments and houses, but every member of the community will be fortunate enough to have access to a balcony or a front or back garden: “It’s something that’s been important to us throughout the design process,” she reveals.

The new homes have been thoughtfully designed using high-quality, eco-friendly materials that blend with the landscape, to help create that peaceful feeling.

“We have tried to be sustainable on several levels, sourcing timber from UK woodlands instead of importing,” says Tereza, “and three of the apartment blocks have a green roof to encourage biodiversity, with wild flowers being planted to help save the bees.” If that wasn’t enough, the star feature has to be the brand-new Springfield Park.

“It’s a tranquil space in one of the most popular London hotspots”

“It’s the largest open space created on a development since the Queen Elizabeth Olympic Park for London 2012. It will include a tennis court, a rugby field and be the perfect place to head to for a lunchtime run, if you work from home.”

Exploring will be easier, too. New bus stops will be added along the main road, bringing transport even closer. So if you want to start with brunch in Battersea and end with dinner in one of Tooting’s fantastic restaurants, it couldn’t be simpler. You might even see Tereza there.

“I am always at Tooting Market for lunch,” she reveals. “I’m Greek so I go there to get my fill of pittas and souvlaki. There’s so many cool independent little eateries.”

Living at Springfield Place will appeal to those who love being close to everything London living has to offer, but a chance to get away from it all once the front door is closed.



Springfield Place is part of an exciting new residential village in a hugely popular south west London destination.

The development will provide a superb mix of 1, 2 and 3 bedroom apartments, and 2 and 3 bedroom houses set back on mews streets, all with private outdoor space and each designed for modern living with bright, flowing interiors.

With a range of new homes to choose from, a fantastic array of local amenities, and excellent transport links – Tooting Bec Underground, Wandsworth Common, and Earlsfield stations are all within easy walking distance – discover your south west London lifestyle at Springfield Place.

Apartments will feature balconies and brick colour thoughtfully chosen to complement the wider Springfield Village – including an existing, listed chapel building set in a public square at the heart of the development.

Springfield Place will bring a fantastic collection of new homes to one of south west London's most desirable property hotspots.

The ground floor of Primrose House, which faces the square, will also feature commercial space, adding to the vibrant community feel of the development. And as well as a 32-acre park, there will be seating areas, a pavilion café and play space, providing room for socialising and catering for younger age ranges.

Whether you choose a 1, 2 or 3 bedroom apartment or house, you'll enjoy a home designed for functionality and modern living. Open-plan living areas deliver spacious interiors filled with natural light.



WHY BARRATT LONDON?

Barratt London's vision

Since the construction of our first London development in 1982, our goal has been to provide high-quality homes for all Londoners by focusing on excellence in design, construction and customer service. The supply of new housing is essential to the continued growth of London as a major global city.

5 Star customer service

As part of Barratt Developments PLC, the UK's most recommended housebuilder, we are fully committed to delivering a superior service for our customers and have been awarded the maximum 5 Star rating for customer satisfaction by the Home Builders Federation every year since 2010*. For our customers, this means that when you buy a Barratt London home, you can be confident you are buying a home of quality and receiving the very best in customer service.

Real peace of mind

Not only does every Barratt London home come with a ten-year structural guarantee from the NHBC, it also comes with a two-year fixtures and fittings warranty**, giving you added peace of mind from the moment you move in.



Olivier's Lounge



PICK UP SOMETHING SPECIAL

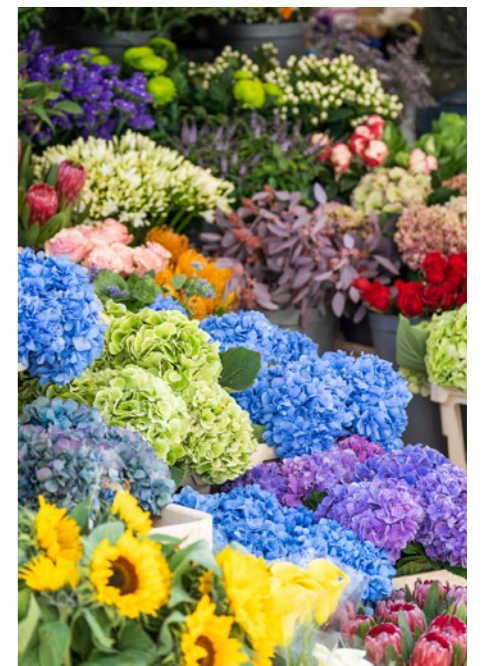
The place to find *exactly* what you're looking for

While the sprawling shopping hubs of central London have their place, there's something wonderfully unique about shopping local – especially with such an eclectic mix of independent boutiques and top international brands on your doorstep.

Northcote Road is a major draw for local browsing. Luxury beauty products can be found at Space NK, with skincare specialists Kiehl's close by. A stylish crowd head to Whistles for the latest contemporary fashion and, with so many fitness studios in the neighbourhood, Sweaty Betty's activewear is a must-visit.

For individual, unique finds, Tooting Market is the go-to destination. On offer, you'll find handmade gifts and rare furniture, even some vintage designer wear. If you have time on your hands, rummaging through records at Dr. Vinyl is a great way to spend a Saturday afternoon.

Shopping locally also means indulging in artisan food. Take a stroll from Earlsfield High Street through Wandsworth Common to Northcote Road, popping into shops and delis to sample fine cheese and delicious charcuterie, or to take home a loaf of freshly baked sourdough.



LOCAL SHOPS

'We offer that personal service'

Priya Crowe, Director, Lark boutique, Tooting, SW17 9NG

What is Lark all about?

We're a husband and wife team, running a gifting boutique selling eclectic and beautiful items across south London for over 20 years. I like to think we're the solution for birthday presents for all genders and ages! We sell clothing, jewellery, candles and more, plus we focus on stocking small locally sourced brands.

What do most customers pop in for?

Unique birthday and celebration cards and then they get tempted by our other gifts. Clothing is very popular because I think we display our shops in a very pretty, creative way. The shops are restocked weekly, and once we've sold out of one product, we'll fill the shelves with something completely different. That's why it's always worth popping in to see what's new!

What's most popular right now?

Wellness and self care is a huge trend at the moment and we stock a lot of candles and beauty products – we have over 100 brands in stock.

Why do you have such loyal customers?

I think it's our variation and it's because we try to be affordable. We have some really expensive items but then also our gifts start at £3. We also offer that personal customer service and our staff are all local, so they really know their stuff. @lark_london

TOP SPOTS

"Roxie steak restaurant in Earlsfield is stunning. It has a lovely ambience and is just top notch."

Priya



Tooting Market



Lark



'THIS IS A GREAT AREA FOR FOODIES'



Jamie Collins, 40, Store Manager
Hamish Johnstons deli,
Northcote Road, SW11

What's on offer at Hamish Johnstons?

We're a specialist deli with over 150 different types of cheese on offer. We also sell some condiments and we have a good selection of wine and beers. People are very welcome to try any cheese they would like – we'll always offer out samples, so you can find something that suits your taste.

What do locals buy?

We sell a lot of Brie de Meaux, a lot of Comté and things like that. We've been here for 28 years so we're pretty settled into the community and have a lot of regulars. Over the years, customers end up

recommending their children for Saturday jobs, so a lot of our rolling batch of students who work in the shop are children of customers and they have been known to us for a long time.

What would you recommend to us if we walked in today?

There's always our 'cheeses of the week' and on Saturdays, we've just started putting together a little selection bag containing three of those, with some sides so you can try something new – it's been very popular.

What's a speciality that customers love?

We're known for our cheese towers, a great alternative to a wedding cake. In the winter, we rent out a raclette machine, so if someone buys a quarter rack of the cheese, we lend them the machine to recreate the famous dish at home. We have quite a good range of wine that we import ourselves from producers around Europe, which you can't really buy anywhere else in the UK. It's good stuff!

If you're not in the shop, where might we find you? The Eagle pub is my kind of place or The Fox & Hounds is also great. It's a really great area if you like good food and drink.

When should we visit the shop?

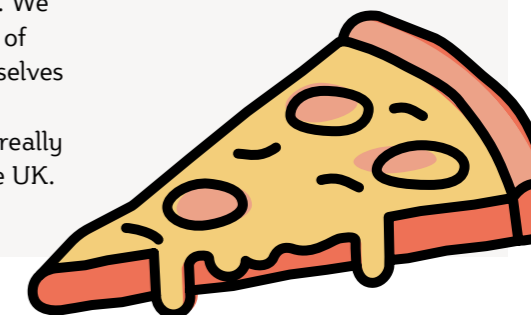
It gets very busy on the weekends and I'd recommend putting your order in for Christmas early – all our staff are foodies and know their stuff, so you're sure to find something you like.

@hjfinecheeses

TOP SPOTS

"Osteria Antica opposite our store is a lovely little Italian for a midweek dinner"

Jamie



Local Spots

TOOTING

My Old Girl & Me
Tooting Market,
SW17 0SN

Woma9
177a Upper Tooting Road,
SW17 7TJ

Katie & Jo
18 Bellevue Road, SW17 7EG

WANDSWORTH

Oliver Bonas
Southside Centre,
SW18 4TF

Flying Tiger Copenhagen
Southside Centre,
SW18 4TF

Kitikate
Southside Centre,
SW18 4TF

Uniqlo
Southside Centre,
SW18 4TF

EARLSFIELD

331
331 Garratt Lane, SW18 4DX

Home at Last London
627 Garratt Lane, SW18 4SX

Boutique by The Eclectic Collection
430 Garratt Lane, SW18 4DX

Furniture City
534 Garratt Lane, SW18 4DX

Open spaces lend themselves to a happy, healthy community

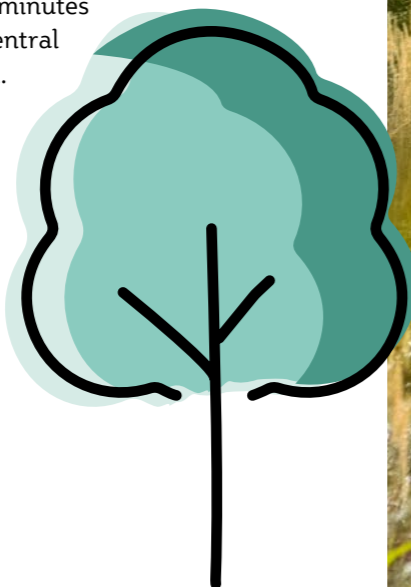
Springfield Place residents are lucky to have green space in abundance – and that means access to live sport, outdoor workouts and being welcomed by an active community who value their wellbeing.

The sprawling Tooting Common stretches out over 152 acres and draws fitness fans from all over. Outdoor yoga, HIIT classes and running clubs are all a daily feature. At its heart, Tooting Bec Lido brings every generation together to swim in the 90m pool, the largest freshwater pool in the UK. Escape the heat in the summer, or become a member to brave the cooler temperatures of the winter season – an invigorating dip is certainly a refreshing way to wake yourself up!

Locals also treasure the peace that comes from cycling through nature as part of their daily commute, walking the dog through the morning mist on Wandsworth Common, or getting more involved with sports like tennis, cricket and even crown green bowling.

The local space also brings the community together for firework displays, festivals and sporting events – and many people enjoy supporting the local rugby team, Battersea Ironsides.

Put simply, locals love the peace of having so much greenery on their doorstep, creating an oasis of calm just 20 minutes from Central London.



Springfield Park

Local Spots

For the outdoors lover in you:

TOOTING

Tooting Gardens

Tooting Bec Common

Tooting Common

Fishponds Playing Field

Figges Marsh

WANDSWORTH

Wandsworth Common

King George's Park

Coronation Gardens

Godley Gardens

EARLSFIELD

Durnsford Road

Recreation Ground

Swaby Gardens

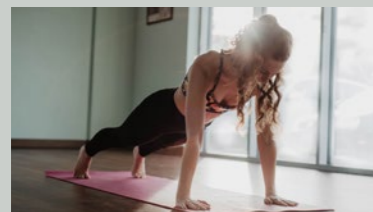
Garratt Park

Garratt Green



Bourne Fitness

LOCAL
SPORT



TOOTING

- Tooting Leisure Centre
- Tooting Bec Athletics Track & Gym
- Tooting Common Football Pitches
- BMF (Be Military Fit)
- Tooting Bec Lido
- CrossFit Tooting

WANDSWORTH

- Aspire at Southfields
- Psycle Clapham (Northcote Road)
- The Gym Group London
- Flip Out Wandsworth

EARLSFIELD

- Wandle Recreation Centre
- The Font Wandsworth
- Parkside Gym
- Decathlon Wandsworth
- Battersea Ironsides Sports Club
- Open Air Fit
- King George's Park Football Pitches

How long have you been keeping Tooting active?

When all the gyms were closed, I realised I could bring the gym to people and Bourne Fitness has grown from there. I used to be up at 5am, run fitness classes or personal training sessions until 8am, do my day job in finance and then train clients until 1am. Now, I do it full time – I love making people feel good about themselves.

What should we expect from a Bourne Fitness class?

I run group classes every Saturday and Sunday on Tooting Common, SW12, and they get booked up quickly! I have loads of gym equipment, so it's basically strength-based circuits but I keep things speedy, so a real mix of strength and cardio. It's fun and I'm never going to be someone to shout at you and make you do 90 press-ups, I'm a friendly face, I promise.

Why do people rave about your classes?

It's that sense of community. People come down with their friends and we get to work. I try and create a safe environment, so you succeed even if you don't feel confident. The best feedback I've had was after my last class,

when a client told me they had never done weights before and were surprised by how much they had enjoyed it. That was a pretty cool moment for me.

“
I try and create a safe environment, so you succeed

How many clients do you teach?

So many, at least 10 per class but I do personal training all over south west London – it's so easy to get around and see them all and I know the area so well because I grew up here.

How do you refuel after class?

I'm a burger guy, and there's some decent burger spots around here. I'm a big fan of Patty & Bun on Northcote Road.

What do you love about living in SW?

To me, it's just home. I love the diversity and there's just so many things to do. I'm 20 mins from the centre of the city but living here means I have the benefit of it sometimes not feeling like London, so you get balance and the best of both worlds. @bournefitness_

*Nathan Bourne, 29, Fitness Trainer
Bourne Fitness, Tooting Common*



Ross Lynam-Carter, 34,
Club Captain Battersea Ironsides Rugby Club, SW17 / Wandsworth

Why do you play rugby?

Firstly, there's the physical side, so it keeps you fit and healthy – I run twice a week across the common and hit the gym three times a week and then I'll be training at the club twice a week – but playing is also good for your mental health. It's a really supportive team, a great social environment and everyone needs that.

How long have you been on the team?

I'm still playing as scrum half in my ninth season, so it's been a proper stint. The club has grown a lot and we have men's, women's and over 950 kids playing every Sunday. It's all about coming together, regardless of gender.

Why should people get involved?

The club is really like a family. We want Battersea Ironsides to be considered the most welcoming in London and we're lucky because we've got an incredible catchment area. Everyone is made to feel as welcome as possible.

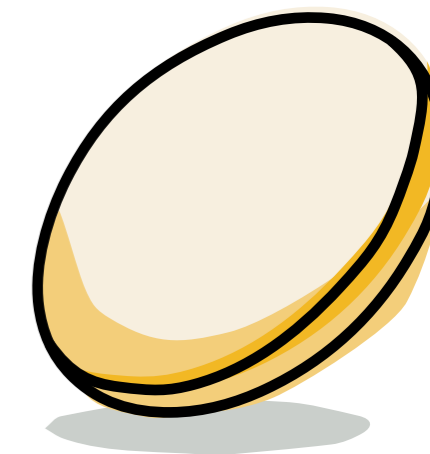
How do the Ironsides support the local community?

As part of our commitment to provide an outlet for people of all ages and all backgrounds, we help out the St George's NHS Trust – it's on our doorstep and a number of doctors and nurses play for the team, so it's close to our hearts. We also support another charity called The Three Pillars, which is about rehabilitating offenders and using the tools rugby teaches to do that. Also, you'll see a lot of guys with very dodgy moustaches around SW17 when it's time to support Movember again.

“
We want Battersea Ironsides to be considered the most welcoming in London

Where do the post-match celebrations happen?

The rugby club itself is always good fun and you'll definitely find a lively crowd after a game at The Wandle of Earlsfield, on Garratt Lane. Also, you can't beat The Ship Inn in Wandsworth. Personally, I like Sorella, the Italian restaurant in Clapham, and Kibou on the Northcote Road for sushi.



How can people join in?

For info about coming down to games to support or join in, visit ironsidesrugby.com or @ironsidesrugby – we often run free taster rugby camps for kids, too.



Battersea Ironsides



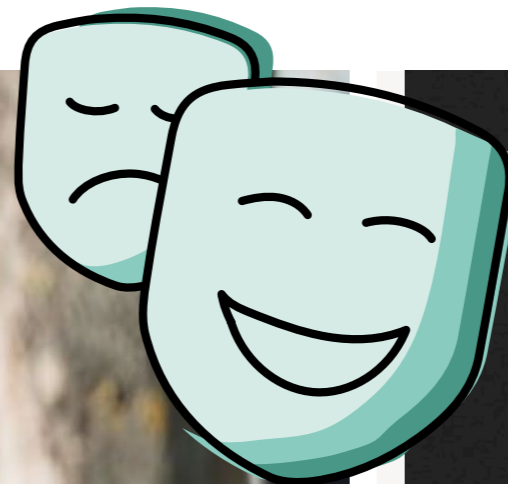
Tooting Lido

A SENSE OF CALM

LOCAL
ARTS



Wandsworth Art Fringe



'There's some amazing talent here'

What makes you laugh?

I like weird, unique comedy that I haven't seen anywhere else. London has some incredible untapped talent and I love giving them the opportunity to shine.

What does a day look like for a comedian and MC?

As a promoter, I'm just hunting for new talent. I might hit a comedy show in central London and just try and find the best venues so I can put on the best gigs. Otherwise I work on my own act, which is sort of magic and failing at it. People seem to laugh!

Who do you recommend seeing?

Luke Oliver is such a brilliant talent. I think he's about to break into the mainstream, so catch him now, while you can!

Where do you put on gigs?

All over London, but at the moment I have a regular night on the last Friday of the month at the Spencer Lawn Tennis Club in Earlsfield and I'm working on a few other venues in south west London. We usually get between 20-40 people to come down and we get a fair few locals and their mates.

@Instantlaughshq

“
... you'll always have
a good night..”



Marvin McCarthy, 31,
comedy promoter, comedian and MC
Instant Laughs, London

Why come down to one of your shows?

Because it's a good mix of very different acts, I love booking line-ups with variety. So, I might start by putting on a comedian who is super-likeable and high energy, followed by someone more edgy and unique and I'll try and end the show with someone more established – basically, you'll always have a good night.

**Live music,
must-see
comedy,
new theatre
and more**

Whether you're a fully fledged culture vulture, or just fancy trying something new, south west London is alive with opportunity.

At The Manor Pub in Tooting, Friday nights are all about acoustic sets with new artists. London-based Brian Grogan and the Elsa Wave duo are among recent acts. The Wandle of Earlsfield hosts bands throughout the day and into the evening, with big local names providing post-game entertainment on match days.

Nearby Balham is home to the restaurant, cinema, bar and event space, The Exhibit. From life drawing to late night djs, retro screenings to south London's best bottomless brunch, it's well worth a visit. Or you could spend the evening roaring with laughter – Tooting Comedy Club is held on the first Thursday of every month at The Tram & Social, with famous faces regularly popping up to try new material.

For film fans, the Clapham Picturehouse is just 20 minutes away and the place to

see independent and arthouse films as well as the latest releases, with a lively bar that's perfect for people-watching. Brixton's Ritzy cinema and cafe is also close by, where you can watch new screenings in the plush theatre of the Grade II listed building.

But for the full theatre experience, head to Wandsworth's Trinity Church. This is home to local amateur dramatics society, The Magdalene Players, who are about to put on Henrik Ibsen's A Doll's House. They're always welcoming new members if you fancy treading the boards yourself.

With Springfield Place as a base, you won't be wondering what you can do with your weekend – you'll be wondering just how much you can fit in.

AN OPEN INVITATION

TOP SPOTS
"There's a great little place called Yori. It's a Korean BBQ place and I could eat there every day."
Marvin



FIND YOUR PLACE

FEATURED DESTINATIONS

- 1. Bababoom
- 2. The Flower Stand
- 3. Hamish Johnston Deli
- 4. Kibou Sushi
- 5. Chez Bruce
- 6. The Hope
- 7. Olivier's Lounge
- 8. Wandsworth Common Cricket Ground
- 9. Instant Laughs
- 10. Spencer Lawn Tennis Club
- 11. Battersea Ironsides
- 12. Dugard & Daughters
- 13. Tara Theatre
- 14. Belle Amie Café
- 15. Well Kneaded Pizzeria
- 16. Cicchetti & Wine
- 17. Bean & Hop
- 18. Roxie Steak
- 19. The Leather Bottle

- 20. Tacos + Tequila
- 21. Daddy Bao
- 22. Lark
- 23. Bourne Fitness

LANDMARK BUILDINGS

- 24. Clapham Band Stand
- 25. Tooting Bec Lido
- 26. Tooting Market
- 27. Tooting Running Track
- 28. Tooting Library

PARKS & GREENSPACE

- 29. Clapham Common
- 30. King George's Park
- 31. Wandsworth Common
- 32. Tooting Common

TRANSPORT

- Overground
- National rail
- Underground

For more information

0330 057 6666
springfieldplace@barrattlondon.com
Search Springfield Place

BARRATT
— LONDON —



*We are the only major national housebuilder to be awarded this 12 years running. "We" refers to the Barratt Developments PLC group brands including Barratt London, Barratt Homes and David Wilson Homes. **First two years covered by Builder Warranty and NHBC Guarantee or similar. Years 3–10 covered by NHBC insurance or similar. Full exclusions and limitations can be found on the NHBC website. We are on the New Homes Quality Code register of registered developers. Computer generated images and development layouts are intended for illustrative purposes only and should be treated as general guidance only. Images may include optional upgrades at additional cost. Calls to 03 numbers are charged at the same rate as dialling an 01 or 02 number. If your fixed line or mobile service has inclusive minutes to 01/02 numbers, then calls to 03 are counted as part of this inclusive call volume. Non-BT customers and mobile phone users should contact their service providers for information about the cost of calls. Information correct at the time of going to print November 2022.



BARRATT
— LONDON —